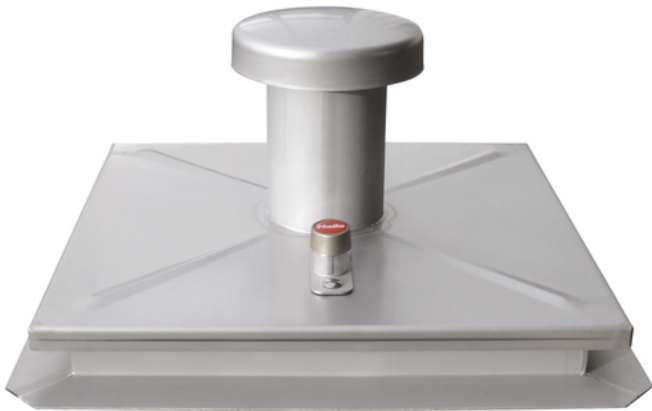


PRODUCT SPECIFICATION SHEET



HS1 in stainless steel 1.4301 /
AISI 304

9510111

GTIN: 4007126047861

Raised central lid with reinforcing beading, concealed hinges, gas strut as an opening aid, self-acting catch and self-opening lock with emergency catch, can be opened from below. The frame consists of an angle profile with all-round frost and weather-resistant, insect-proof seal and internal dowel brackets (fixing material available separately under accessories). Other sizes available on request.

Length x width in mm

1000x1000

Version

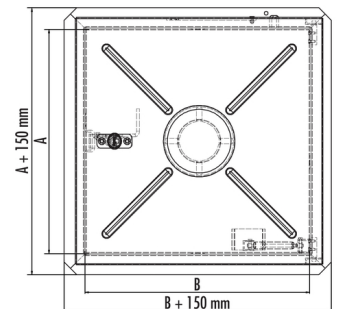
With ventilation

- Rectangular design
- Surface water proof
- Material: Stainless steel 1.4301 / ASTM 304
- Plate thickness 2mm

At additional cost:

- Locking action with profile cylinder
- operator key
- Material: 1.4571/ASTM 316 ti
- Safety grille
- Safety rail

Specifications



PRODUCT SPECIFICATION SHEET

Material	Stainless steel 1.4301 / AISI 304
Plate thickness	2
Tightness	surface water proof
raised from ground	✓
rectangular	✓
Length x width in mm	1000x1000
Version	With ventilation
Number of optional fixing materials (pcs.)	8

